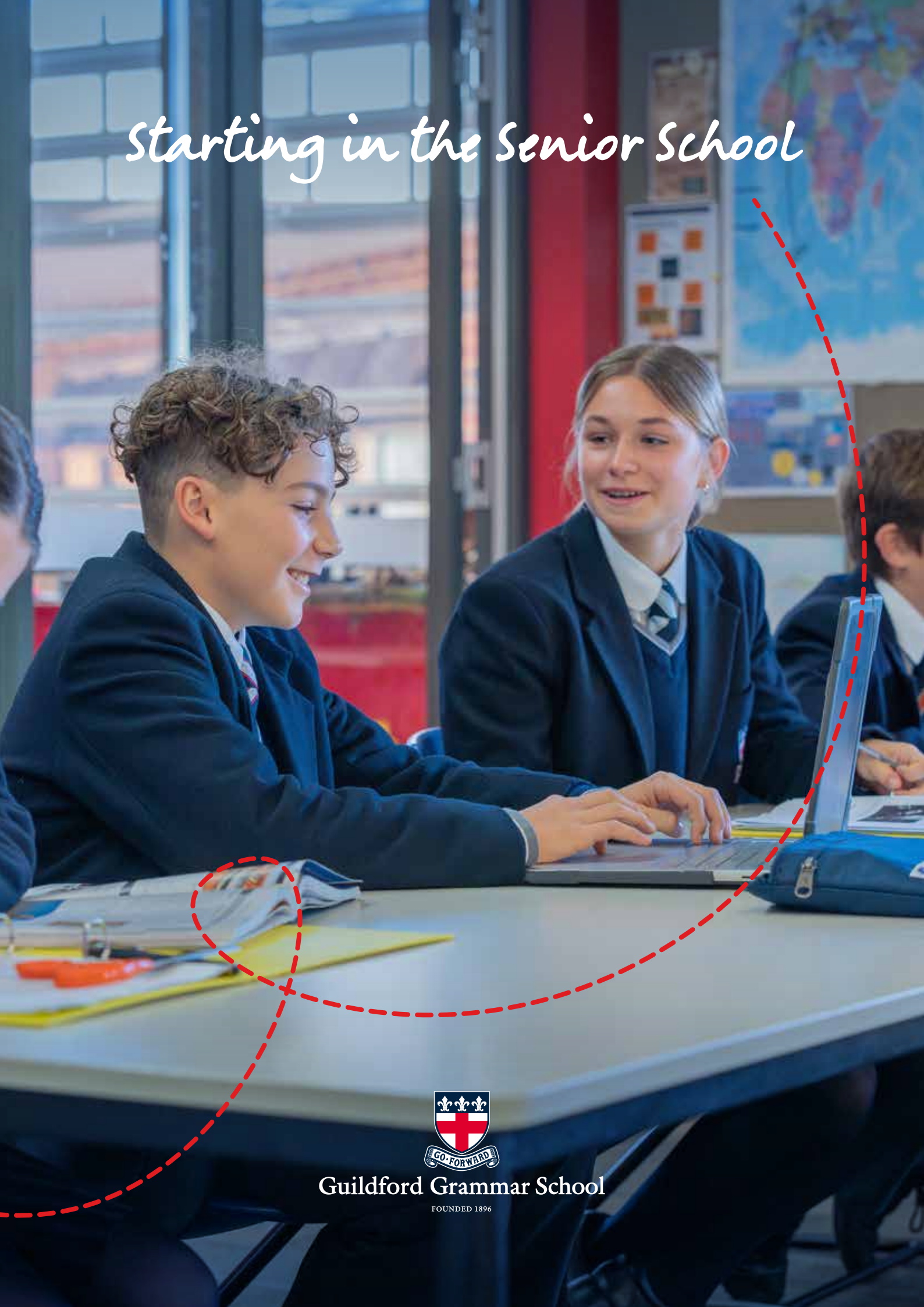


# *Starting in the Senior School*



**Guildford Grammar School**

FOUNDED 1896

# 2025 Term Dates

- Term 1** Begins: (Years 7 and 12) Tuesday 28 January  
(Years 8, 9, 10 and 11) Wednesday 29 January  
Ends: Friday 11 April  
(Mid-Term break: Friday 28 February - Monday 3 March inclusive)
- Term 2** Begins: Tuesday 29 April  
Ends: Friday 27 June  
(Mid-Term break: Friday 30 May - Monday 2 June inclusive)
- Term 3** Begins: Tuesday 22 July  
Ends: Friday 26 September  
(Mid-Term break: Friday 22 August - Monday 25 August inclusive)
- Term 4** Begins: (Years K-11) Monday 13 October  
(Year 12) Tuesday 14 October  
Ends: Friday 5 December

## Useful information

- Website: [www.ggs.wa.edu.au](http://www.ggs.wa.edu.au)
- Current families: [www.ggs.wa.edu.au/parent-hub/](http://www.ggs.wa.edu.au/parent-hub/)
- Address: 11 Terrace Rd Guildford 6055
- Phone: 08 9377 9222

## Contacts

### Ms Ashlea Harvey

Head of Year 7

[ashlea.harvey@ggs.wa.edu.au](mailto:ashlea.harvey@ggs.wa.edu.au)

### Mrs Keralee Radi

Assistant Deputy Principal (7-8)

[keralee.radi@ggs.wa.edu.au](mailto:keralee.radi@ggs.wa.edu.au)

### Mrs Julia McGibbon-Briggs

Deputy Principal – Student Experience

[julia.mcgibbon-briggs@ggs.wa.edu.au](mailto:julia.mcgibbon-briggs@ggs.wa.edu.au)



# Welcome

Welcome to Guildford Grammar School. We are so excited you are joining our senior school community. This handbook is designed to help guide you in your first few weeks and to answer many common questions you may have. We encourage you to begin familiarising yourself with some of the rhythms and routines of daily life. If you have any further questions, there will be plenty of staff and students around to help you. We are looking forward to welcoming you to our wonderful school.

At Guildford Grammar School we try our hardest in all that we do. We strive to make good choices, to be kind and caring towards ourselves, others and the environment around us. We embrace opportunities and ensure that we are ready to help and serve others. We are inclusive of all, and we make every effort to ensure that our school, our culture and reputation is positive, encouraging and humble.

## Our School Purpose

Inspiring students to achieve personal excellence and to be outstanding citizens who work to create a just, loving, and peaceful society.

## Our Values

- **Excellence** – being the best we can be
- **Respect** – showing appreciation and consideration for those around us
- **Integrity** – sticking to moral and ethical principles even when others are not looking
- **Spirituality** – a personal way of loving, accepting and sharing with people and the world
- **Compassion** – showing sympathy and empathy for others

## Our Motto

*Go forward*

## Our Anglican identity

The religious, spiritual and liturgical life of our School is central to our mission, and extends beyond the Chapel to the classroom, on stage, on the sporting field or while travelling to and from school. We promote an inclusive, Christian ethos in the Anglican tradition that recognises thoughtful place for the Bible. All students attend Chapel Services, congregational singing and participate in Christian and religious education classes. With a proud heritage of over 125 years and guided by the Anglican faith, students are inspired to live a life of purpose.

# Year 7

**The heart of the School for Year 7 students is based in the Thwaites Centre. Many of your classes, along with your Mentor and lockers will be in this area. We encourage you to enjoy the many facilities available that will help you to develop friendships and have fun.**

## **The Year 7 & 8 Hub**

The Hub is located on the ground floor of the Thwaites Centre and is a space for you to gather, collaborate and work with others. There are also self-catering facilities such as microwaves and sandwich presses. This is an area that you can use at recess and lunchtime, and you will be able to find your Mentor, Head of Year, and Assistant Deputy Principal (7&8) in the area.

## **Play areas**

The Thwaites Centre has areas designed especially for Year 7 and 8 students! We encourage you to make use of the nature play area to hang out. The table tennis tables, handball courts and basketball areas are for you; bats and balls can be borrowed from the Hub.

## **Mentor**

Mentor period takes place in the morning and allows you to gather for a variety of activities. Mentor groups are House-based and you will attend Chapel and Congo with these groups, whilst spending time with Peer Support Leaders. Your Mentor teacher is an important person that can support you at school. They will provide support, help you navigate new experiences and celebrate all of your achievements.

## **Connection to Houses**

All students are in a House. Heads of House support students in Year 9-12, and have an active role in supporting Year 7 and 8 students with the variety of House-based activities and competitions that take place such as interhouse carnivals like Swimming and Athletics. Students at GGS are very proud of their Houses and we encourage you to learn more about your House and how to get involved.

## **Leadership**

There are a number of ways we develop student leadership. Sometimes we are the leaders and sometimes we are led. Mentor Captains are our Year 7 Captains that support the Mentor in the day-to-day running of Mentor period. Mentor Captains will attend meetings with the Head of Year to discuss activities and other Year 7 events. Year 10 Peer Support Leaders are assigned to each Year 7 Mentor and support Year 7 students in their transition into senior school. They can help you familiarise yourself with the campus and take part in fun activities with you.

## **Outdoor learning and excursions**

During your time at the School, there are a series of compulsory outdoor experiences that will extend your learning, improve your wellbeing, increase your sense of belonging and purpose at school, and help develop relationships with staff and other students. These are fun with enough challenges to help you grow and learn. The Year 7 Camp is in Term 3 and we will provide more information closer to this time.

## **Co-curricular activities and sport**

Everyone is involved in co-curricular activities, sports and sporting competitions like the PSA or ACC. Training is generally twice a week, often on a Monday and Wednesday afternoon in the middle years but your coaches will confirm all these details closer to the time. For after school sport training, you wear your sport-specific uniform and bring with you any equipment you need to do that sport (e.g. hockey stick).

There are many other co-curricular activities that you can get involved in from Drama to Music to Debating to Philosophy Café. The choice is endless. We encourage you to get involved and try something new.

## **Class sport (Health and Physical Education)**

One of the big changes between many primary and secondary schools is the need to get changed for PE. You will do this at the start of the lesson in the change rooms. Make sure all your uniform and equipment is well labelled. After PE you will get changed back into your formal uniform.





# Our Senior School Houses

**Our Houses are a unique feature of our School. Each of our eight Houses has a physical building. We are proud of our House system and the important role it plays within a Guildford Grammar school education.**

Year 7 and 8 students are part of the House system and Mentor groups are aligned with Houses. We continue to cultivate House spirit and our unique culture through House meetings, Peer Support activities and House-based activities, competitions and carnivals.



## School House

Established 1922

School House, is one of the original boarding houses of the School, established some years after the original school was founded.

School House Mentor

**Shantelle Pike**

[Shantelle.Pike@ggs.wa.edu.au](mailto:Shantelle.Pike@ggs.wa.edu.au)



## Stirling House

Established 1922

Stirling House was the original day house named after Captain James Stirling attended by day students only. In 1961, Stirling House became too large and was split into two, establishing Woodbridge House later on.

Stirling House Mentor

**Ellie Craig**

[Ellie.Craig@ggs.wa.edu.au](mailto:Ellie.Craig@ggs.wa.edu.au)



## St George's House

Established 1922

St George's House, is one of the original houses of the School. Founded in 1922. St George's House, named after the patron Saint of England, St George is also one of the patron saints of the Chapel which was built in 1914 and holds great significance to our link to England.

St George's House Mentor

**Annabel Elliot**

[Annabel.Elliot@ggs.wa.edu.au](mailto:Annabel.Elliot@ggs.wa.edu.au)



## Henn's House

Established 1927

Henn's House was the third boarding house and named in honour of Percival Umfreville Henn, the fourth Headmaster of School. Percival Henn achieved a tremendous amount in his tenure, orchestrating the building of the Chapel and implementing many systems and structures based on the Woodard Schools (a group of famous English Public Schools).

Henn's House Mentor

**Tony Wildman**

[Tony.Wildman@ggs.wa.edu.au](mailto:Tony.Wildman@ggs.wa.edu.au)



### **Harper House**

Established 1958

Harper House was the original Headmaster's House, built in 1911, and then later converted into the boarding house in 1957 and opened in 1958. The House was named in honour of the School's founder Charles Harper.

Harper House Mentor  
**Charlotte Donovan**  
[Charlotte.Donovan@ggs.wa.edu.au](mailto:Charlotte.Donovan@ggs.wa.edu.au)



### **Freeth House**

Established 1965

Freeth House was named after Robert Freeth, the sixth Headmaster of the School and was added due to increasing school numbers and a need for more Houses.

Freeth House Mentor  
**Jared Faint**  
[Jared.Faint@ggs.wa.edu.au](mailto:Jared.Faint@ggs.wa.edu.au)



### **Woodbridge House**

Established 1962

Woodbridge House was initially founded when Stirling House became too large and split into two, later becoming named Woodbridge. Built as the second day house it was named in honour of the former Harper residence and initial site of the school, Woodbridge House, which sits adjacent to campus and is now managed by the National Trust.

Woodbridge House Mentor  
**Charles Fedor**  
[Charles.Fedor@ggs.wa.edu.au](mailto:Charles.Fedor@ggs.wa.edu.au)



### **Bennett House**

Established 1980

Bennett House is the most recently founded House and was the third day house founded. It is named after Frank Bennett, the first Headmaster of the School.

Bennett House Mentor  
**Jared Faint**  
[Jared.Faint@ggs.wa.edu.au](mailto:Jared.Faint@ggs.wa.edu.au)







# The Academic Day

During the school week, Senior School students adhere to a daily routine that has been carefully refined to match student needs and responsibilities.

## Monday-Thursday

Activity	Time	Duration
Mentor/Chapel	8.25 am	25 min
Period 1	8.50 am	60 min
Period 2	9.50 am	60 min
Recess	10.50 am	20 min
Period 3	11.10 am	55 min
Period 4	12.05 pm	55 min
Lunch	1.00 pm	40 min
Period 5	1.40 pm	55 min
Period 6	2.35 pm	55 min
End of Day	3.30 pm	

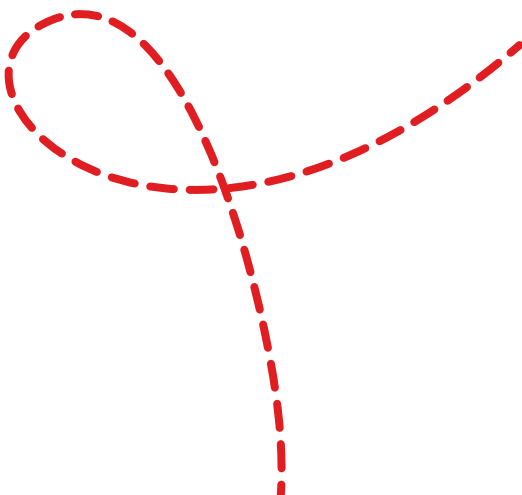
## Friday

Activity	Time	Duration
Mentor/Chapel	8.25 am	10 min
Period 1	8.50 am	65 min
Period 2	9.55 am	65 min
Recess	11.00 am	20 min
Period 3	11.30 am	60 min
Lunch	12.20 pm	40 min
Sport/Co-Curricular Program	1.00 pm	150 min
End of Day	3.30 pm	

## Getting ready for class

For each class you will need to take your iPad, diary, pencil case and something to write in. The booklist outlines what exercise and text books you will need for each class and these should also be taken with you.

Take books for two periods at a time to reduce how many trips to your locker are required. Take your books for period 1 and 2, then 3 and 4 and finally 5 and 6.



## Independent Learning (Homework)

Guildford Grammar School believe that our students achieve personal excellence by becoming independent lifelong learners. Independent learning is completed outside of class, negotiated with and guided by the teacher, and for which students have responsibility.

Independent learning fulfils the following functions:

- Reinforcement or consolidation of learning
- Preparation for an upcoming class
- Working toward task or assessment completion
- Embedding learning from the day/week/unit
- Revision based on feedback
- Revising learning and understanding for connectedness to new content and upcoming tests/assessments

Year 7 students should expect to complete 5-7 hours of independent learning per week. Teachers will provide a guide on approximately how long to spend on a given task.

# Things to know

## Wellbeing

We believe that wellbeing is important and is at the heart of all that we do. Positive wellbeing supports learning in the classroom, improves the ability to make friends and grow as a person. We participate in many explicit activities to support and develop personal and collective wellbeing. This includes our Year 7 Grow Wellbeing program, guest speakers, excursions, outdoor learning, our beautiful grounds, pastoral care structure, Anglican identity and extensive co-curricular opportunities. We encourage everyone to try new things and immerse themselves in all that our School has to offer, and to be kind, upstanding citizens. This contributes to our sense of belonging and promotes positive school culture.

## The Wellness Centre

The Wellness Centre is adjacent to Robinson Court. Our pastoral care team are able to help you, should you need it. The first people you should always go to if you need extra support are your Mentor and Head of Year.

## Uniform

Our uniform defines us as a school and gives us a sense of belonging and unity. We have a uniform policy and all students must ensure that they adhere to this. Wear your uniform with pride and make sure that each morning you make good choices about how you present yourself. Uniform matters.

[The Uniform Guidelines can be viewed here.](#)

## Tuck Shop and Food Van

You can order your lunch at the Tuck Shop each day and also purchase food at recess and lunchtime here. We also have our Food Van where you can purchase food before school and at recess and lunchtime. You can pay for food and drinks with an EFTPOS card or on your SmartRider by adding money to your Flexischools account.

## Medical Centre

The Medical Centre is located near the Boarding House. If you are feeling unwell or need medical assistance, please let your class teacher know and make your way to the Medical Centre to see one of our nurses.

## Technology

All students have a school issued device for supporting their learning. You will take this to each lesson. We recommend that you carry this in a carry case to keep it safe. You are responsible for the care of your device, so we suggest not leaving them unattended and treating them with care. Devices are to be used at the discretion of the teacher and they will let you know when to get them out in class.

## Anything else?

Your Mentor and Head of Year 7 welcome any other questions that you may have about your start at Guildford Grammar School. Welcome aboard, we are excited for your arrival.







# Staying organised

## Lockers and bags

You will be allocated a locker and a lock at the start of the year. You keep your schoolbooks, mobile phone, school bag and sports bag in your locker. Your Mentor will help you keep it tidy and organised.

## Mobile phones & Smart Watches

Mobile phones are to be kept in your school locker and are not to be used during the day. If you need to contact home, there is a phone in Senior Administration.

Smart watches will also need to remain in lockers or at home during the school day.

## Library

The Senior School Library is open from 7.30am – 5.30pm Monday - Thursday and 7.30am – 4.00pm on Fridays. The Library is a great place to get your homework done before or after school. If you arrive to school prior to 8am, please go to the Library.

## Drop off and pick up

Students start arriving at school at about 8am if they don't have any prior commitments. There are many drop off areas shown on the school map.

## SmartRiders

All students will receive their SmartRiders in the first week. This enables you to catch public transport and is also your library card and food truck and tuck shop card. Money can be loaded onto these accounts via Flexischools on the School website.

## Sports calendar

Our Sports calendar is where you can complete all of your sport nominations and find information about fixtures and games: [www.ggs-sport.com](http://www.ggs-sport.com). Your Mentors will support you in accessing and using these platforms.

## SEQTA

SEQTA is our online learning management platform that teachers, students and parents use. As a student you will use SEQTA Learn and it will provide you with online access to course outlines, assessment schedules, your timetable and other useful tools to make school life easier. Login details for SEQTA will be given on arrival.

## Senior Admin

Senior Admin is on the western edge of Chapel Close, near the jacaranda tree. This is where you can go if you need to sign in late or go home early. Please make sure you smile and use your manners when greeting our helpful staff.

## Late arrival and early departure

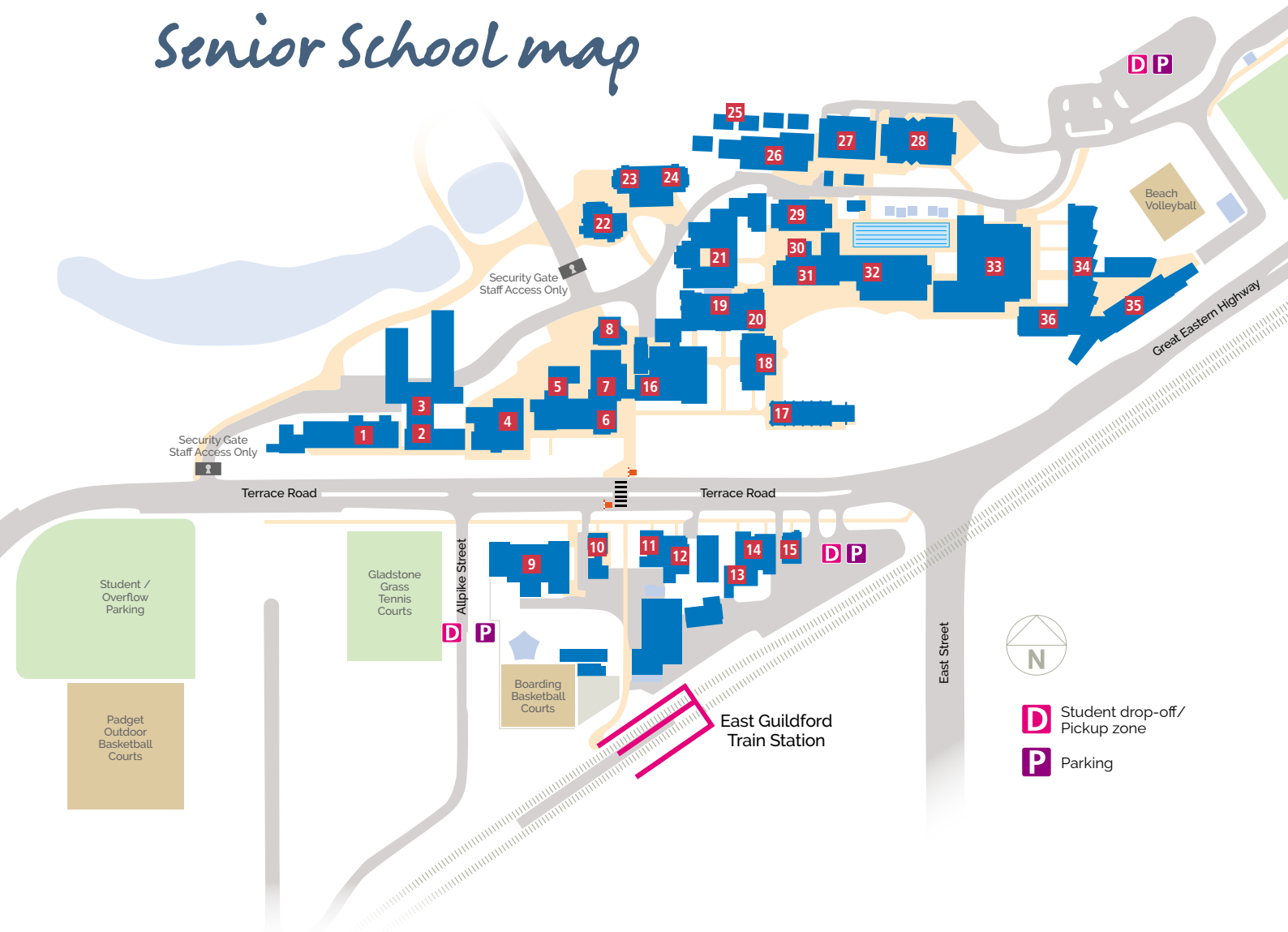
There are times when you might need to arrive at school late or leave early. Please make sure that your parent or carer has emailed: [studentservices@ggs.wa.edu.au](mailto:studentservices@ggs.wa.edu.au) to let us know. You will need to sign in or out at Senior Admin or at the HUB.

## Student Diary

All students will be provided with a student diary. Your diary is an organisational tool and where you can record homework, assignment due dates and other important information. You will need to get it signed by your parents or carer and your Mentor will check this regularly.



# Senior School map



- 1 Sir Francis Burt Senior Hall of Residence
- 2 Boarding House
- 3 Medical Centre
- 4 Henn's House and St George's House
- 5 Freeth House
- 6 Museum, Big School Room and School of Music
- 7 School House
- 8 Tuckshop
- 9 Graham Malcolm Junior Hall of Residence
- 10 Community Relations Office
- 11 Archives and Old Guildfordians
- 12 Dance Studio
- 13 Clothing Shop
- 14 Finance Office
- 15 Printery
- 16 Dining Hall
- 17 Chapel of St Mary & St George
- 18 Senior School Administration
- 19 Hamilton Library and Tech Centre

- 20 LOTE Faculty and Computing
- 21 Robinson Court and Education Support, Indigenous Students
- 22 Stirling House
- 23 Woodbridge House
- 24 Bennett House
- 25 Demountables
- 26 Brine Building SOSE Faculty
- 27 Wickham Centre Arts, T&E Faculty
- 28 David Lawe Davies Centre
- 29 Harper House Sturtridge Building
- 30 Counsellor's Office
- 31 Memorial Science Building
- 32 Moody Building Science Faculty
- 33 Oliverson PE Centre
- 34 Thwaites Centre Mathematics and English Faculty
- 35 Thwaites Centre Catalyst Classrooms
- 36 Thwaites Centre School Reception







# Guildford Grammar School

FOUNDED 1896

11 Terrace Road, Guildford, WA 6055 • [www.ggs.wa.edu.au](http://www.ggs.wa.edu.au)

Updated November 2024